



**KIRLOSKAR PNEUMATIC CO. LTD.**

Enriching Lives

Leaders in Air and Gas  
Compression Technologies



**PORTABLE AIR COMPRESSORS**





Established in 1888, Kirloskar Group is one of oldest industrial house in India. As one of the leading engineering conglomerates, Kirloskar has been enriching the lives of millions through world class engineering solutions, reliable contemporary products and services.

Pillared on the values of true understanding, true effort and true commitment, in every endeavor, small or big, our Global foothold is getting stronger with every passing moment.

Our presence in many countries like UAE, Kuwait, KSA, South Africa, Kenya, Vietnam, etc. through our Sales and Service offices is proof of our commitment to offer spare parts and service support at customer's doorsteps.

**Kirloskar Pneumatic**, an ISO 9001 Company, has been manufacturing widest range of efficient and reliable air and gas compressors for over four decades.

These compressors are single stage, oil injected, helical twin screw machines, driven by diesel engine of suitable rating (horse power), coupled through a flexible coupling.

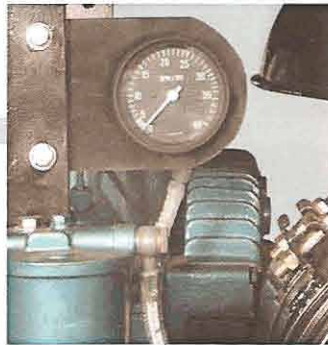
Our diesel engine driven rotary twin screw portable compressors provide uninterrupted supply of compressed air even under trying conditions.

Our compressors offer, added advantage to the user like.... Rugged Construction, High Reliability, Easy Maintenance, Economical Operation, Superior Service Support.



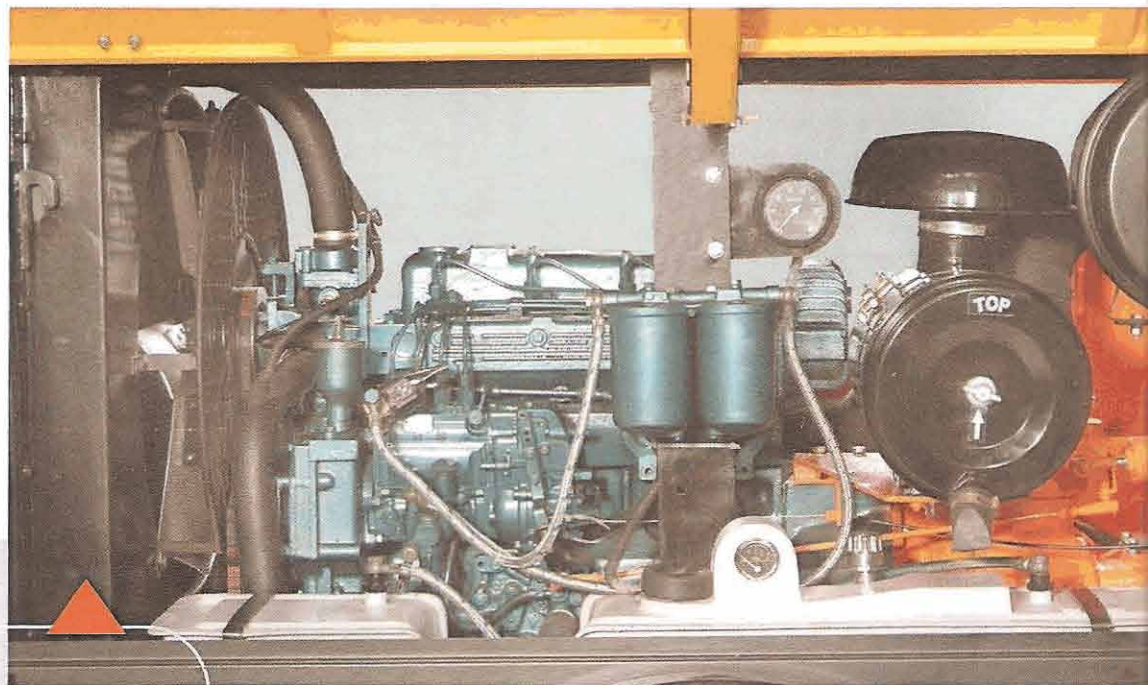
## PORTABLE AIR COMPRESSORS





#### Engine RPM Meter:

Engine RPM Meter is located conveniently in the compressor, which helps in tuning the engine while doing setting by maintenance team.



All the maintenance points are located on the same side of the unit

- Engine Oil Filter
- Engine Fuel Filter
- Engine Air Filter
- Compressor Oil Filter
- Fuel Filling Point
- Engine RPM Meter



#### Control Panel:

The instrument control panel consists of elements required for operation of the compressor as well as for monitoring the performance of compressor and engine. It also incorporates safety alarm with regards to abnormalities in engine oil pressure, engine water temperature, compressor Air/oil temperature, fuse failure and battery charge. The control panel is ergonomically designed and aptly located for ease of operation. Lockable door is provided to avoid unauthorized use and tampering.



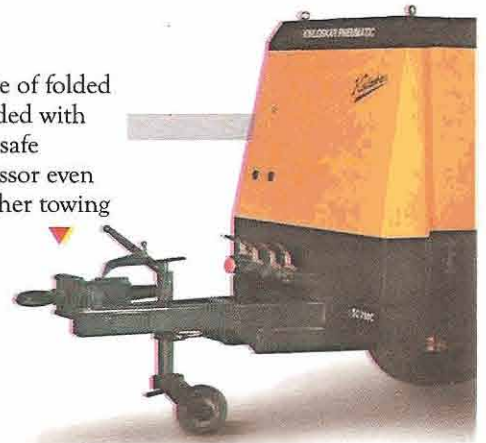
### Pressure Switch:

Pressure Switch is a unique safety feature of this compressor, which automatically cuts off the engine in case of excessive pressure built up. This makes the compressor extra safe.



### Tow Bar:

Heavy duty Tow Bar made of folded channel material is provided with the equipment to ensure safe movement of the compressor even in rough terrain or at higher towing speeds on the highway.



### Canopy Door Stopper:

The cam lock system in the canopy door provides a safe and positive self-locking of the canopy door when opened. This ensures that the door does not fall or close on its own and remains open and stable.



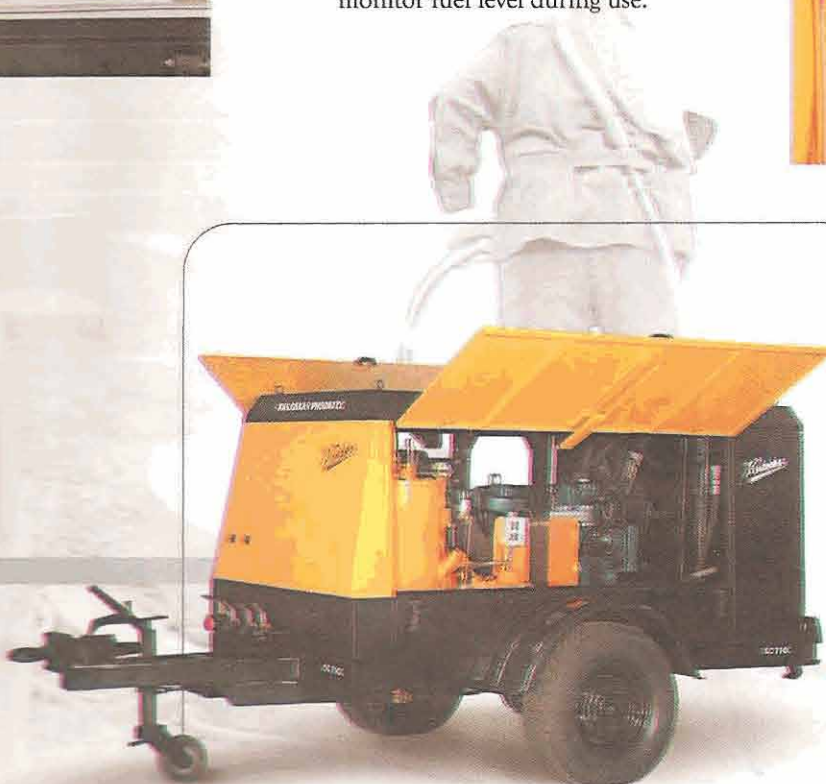
### Fuel level indicator

Helps the operator to monitor fuel level during use.



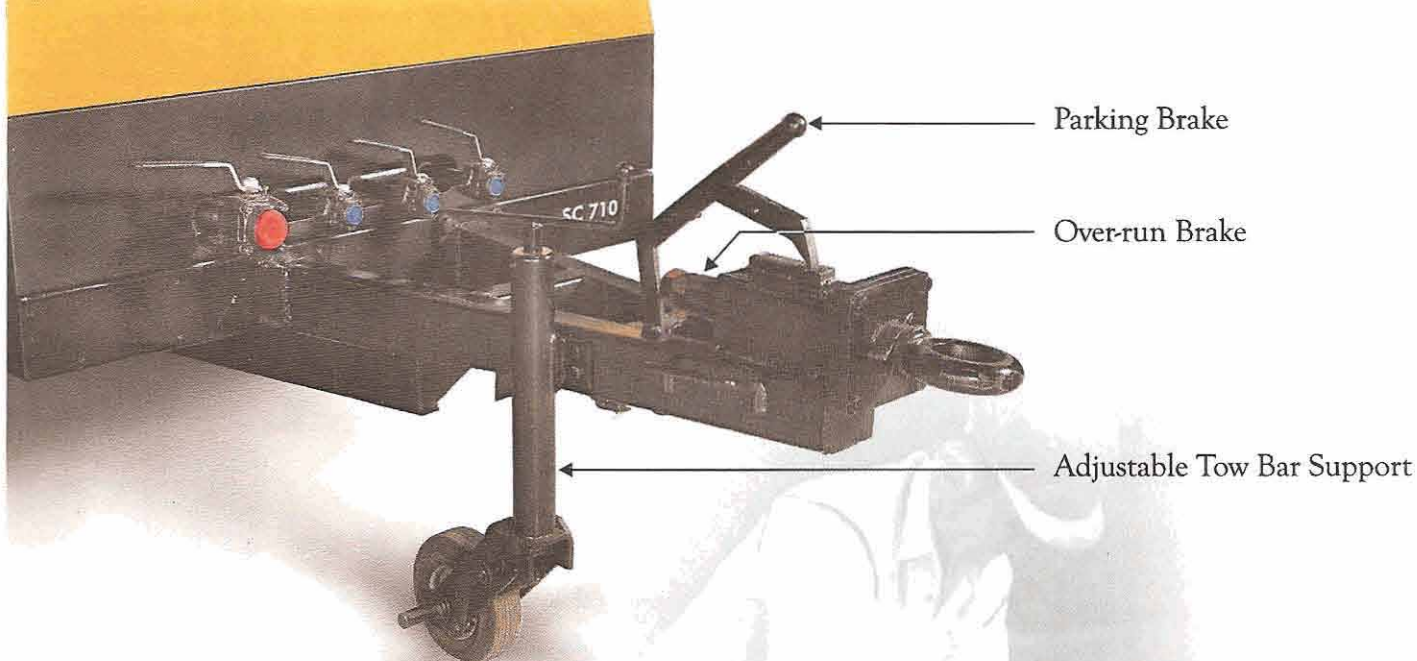
### Moisture Filter:

Another unique feature of this compressor is the moisture filter. This ensures removal of all condensate moisture in the control line air and safe guards the control elements like proportional controller, servo cylinder etc. and improves their reliability and life.



- Easy to transport - automotive grade broad radial tyres.
- Fuel efficient engine.
- Fail safe controls.
- Ample space for service approach.
- Designed to operate with canopy doors closed.
- Aesthetically superior looks and finish.
- Adjustable tow bar support.





▲ **Spare Parts:** As a part of our after sales service policy, we ensure availability of consumables and spare parts at all our dealer outlets, in adequate quantity. In the interest of safety, customers are advised to use only genuine KIRLOSKAR branded consumables and spares.



▲ **Brake Light:** While towing the compressor on highway, it is mandatory for the vehicle to have proper break lights. This feature is provided in this compressor through a port, which can be connected to the break lights of the towing vehicle.



#### Outlet Connections:

Multiple outlet connections of different sizes are provided to connect multiple tools for different applications. This provides flexibility to use the equipment for varied applications like Sand Blasting, Drilling, Breaking, Gas cutting etc.

## Compressor Data

Model		SC 705 C	SC 706 C	SC 707 C	SC 709 C	SC 710 C	SC 1009 C
Normal operating pressure	kg / cm <sup>2</sup> g psig	7 100	7 100	7 100	7 100	7 100	10 142
Actual free air delivery guaranteed as per ISO 1217 edition 3 1996	lit/sec m <sup>3</sup> / min	82.6 4.96	94.4 5.66	118.0 7.08	141.6 8.49	170.0 10.19	141.6 8.49
Annexure D	cfm	175	200	250	300	360	300
Oil fill	litres US gal	38 10.04	38 10.04	38 10.04	38 10.04	38 10.04	38 10.04
Air outlet connections	Inch BSP	1½" x 1No, ¾" x 3 Nos					
Max ambient temperature	deg C deg F	50 122	50 122	50 122	50 122	50 122	50 122
Battery capacity		12 V, 150 AH					
Tyre size		235 / 75 R15 105S					
Air pressure for tyre	kg / cm <sup>2</sup> g psig	4.15 60					

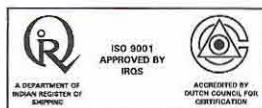
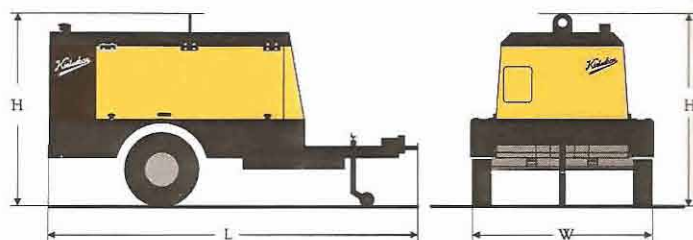
## Engine Data

Model		4R1040	4R1040T	4R1040T	4R1040T	4R1040T	4R1040T
Number of cylinders		4	4	4	4	4	4
Rated speed	rev / min	1850	2200	2200	2200	2200	2200
Output at rated speed	kW hp	51.5 69	78.3 105	78.3 105	78.3 105	78.3 105	78.3 105
Fuel tank capacity	litres US gal	120 31.70	120 31.70	120 31.70	120 31.70	120 31.70	120 31.70

## Unit Dimensions and Weight

Length with towbar (L)	mm	3710					
Total width (W)	mm	1800					
Height (H)	mm	1930					
Box width	mm	1300					
Wheel track width	mm	1600					
Weight with oil and fuel	kg pounds	1800 3960	1800 3960	1800 3960	1850 4070	1850 4070	1850 4070

Specifications shown are indicative and are subject to change without prior notice.



Enriching Lives

### KIRLOSKAR PNEUMATIC CO. LTD.

REGD. OFFICE & WORKS :  
Hadapsar Industrial Estate, Pune, INDIA 411 013.  
Ph : +91 20 26870133, 26870341 Fax : +91 20 26870297, 26870634.  
Email : acdmktg@kpcl.net

### KIRLOSKAR MIDDLE EAST FZE

P.O. Box 4178, Ajman, United Arab Emirates.  
Ph : +971 6 7457667 Fax : +971 6 7448636. Mobile : +971 50 481 3651  
Email : Mangesh-Joshi@kirloskar.ae